

The following is an introduction to noteworthy feature of APEXFiz Design software version V-09.

Support for exporting texture maps in flat knit (for 3D only)

- Supported Plans: **Design-Knit** **Design Pro** **3D (option)**
- Design-Sox** * For exclusive use in sock design only

It is now possible to export various map images and U3M files (management files of various map images) in 3D function of flat knit. If you use these files when draping materials to objects in 3D software, you will be able to express amazingly realistic images such as the natural unevenness and texture of the fabric.

Export knit in U3M


V-09

- **6 types of maps:**
Alpha, Base color, Displacement, Metalness, Normal, Roughness
- Loading .u3m can apply all maps at once.

Item A

- Col.1_Front
- Col.1_Back
- Col.2_Front
- Col.2_Back

—textures



—ItemA_Col.1_Front.u3m

gITF Export

V-04B

- **3 types of maps:**
Base color + Alpha, Normal, Metalness + Roughness
- 3D data and maps are saved in one folder.

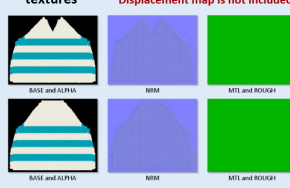
Item A Col.1

Item A Col.2

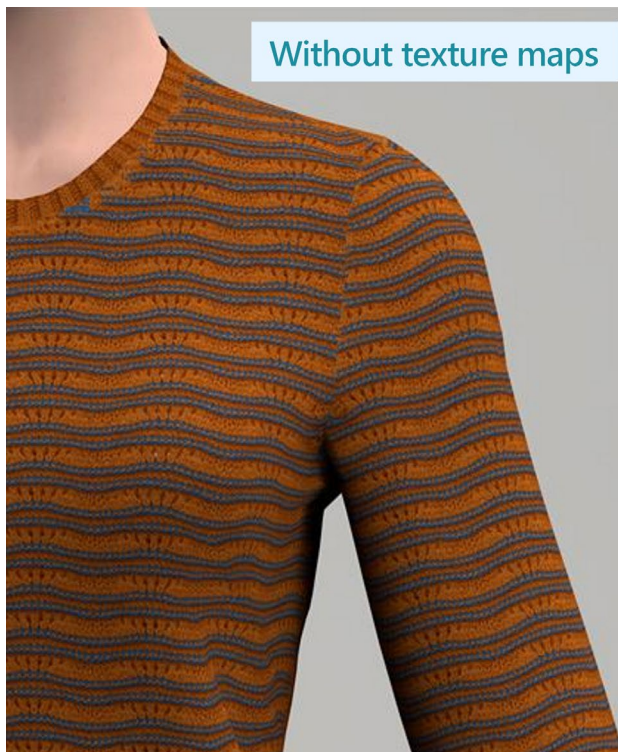
Item B Col.1

Item B Col.2

—textures Displacement map is not included



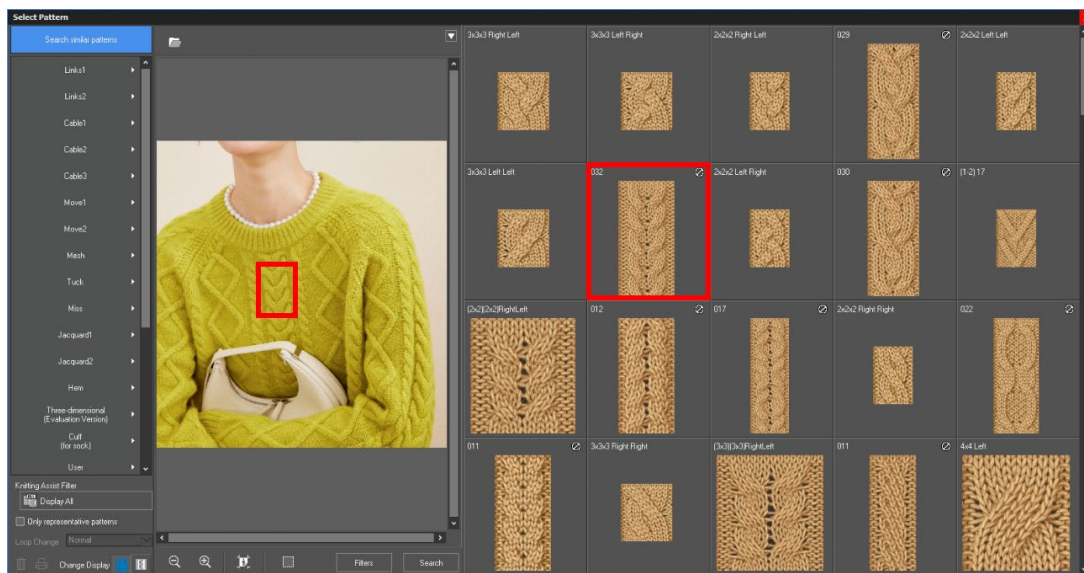
—ItemA_Col.1.gITF



Improved Search Similar Pattern menu

■ Supported Plans: **Design-Knit** **Design Pro**

By changing the AI model, accuracy and speed for searching similar patterns have been improved.



By adding SHIMA Datamall™ knit patterns to the search targets, data collection and visualization of your desired designs can now be performed more efficiently.

*  is displayed in the thumbnails of SHIMA Datamall™ knit patterns.



Click! SHIMA  Datamall™

♥ KD6107 5 Point

- ▶ Pattern/Structure : Horizontal Stripes, Mesh, Stitch Move
- ▶ Texture gauge : 7
- ▶ Knitting Condition :
- ▶ Available version : S:04C/R:20C or above ([How to check the software version](#))
- ▶ Registration Date : 2022.12.12
- ▶ Related Product No. :

[Add to cart](#)

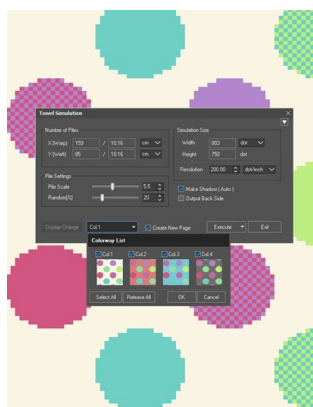
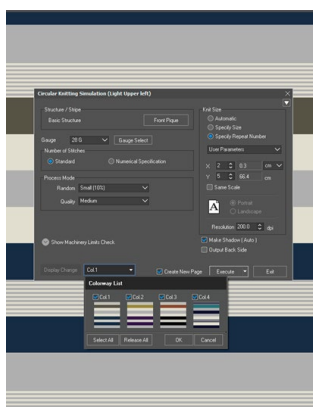
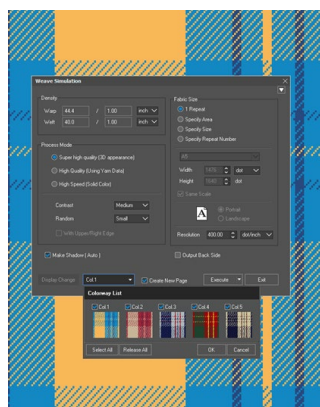
Depending on the software version of the SDS-ONE APEX series, the data processing method may be different or error messages may be displayed. If you have any questions, please contact your local distributor or technical service center.
[How to use in SDS-ONE APEX series](#)

Support for selecting multiple colorways in 2D fabric simulations and Export for U3M menus

■ Supported Plans: **Design-Weave** **Design-Knit** **Design Pro**

It is available for Loop Simulation, Weave Simulation, Circular Knitting Simulation, Towel Simulation, and Export for U3M menus. By reducing the operational steps, you can now complete your work faster and more efficiently.

* The Loop Simulation menu does not support "Export for U3M" menu.



For more details and other new functions, please check the SHIMA HelpCenter.

- For APEXFiz Design

<https://helpcenter.shimaseiki.com/en/help/product/5567/?cc=6800>

- For 3D Option

<https://helpcenter.shimaseiki.com/en/help/product/12560/?cc=15594>

* SHIMA HelpCenter is available only to users of SHIMA SEIKI products.

* To use SHIMA HelpCenter, you are required an account on [SHIMA online](https://www.shimaseiki.com).