



## Corporate Profile



Developing the most advanced technology  
and keeping it most affordable.  
This is the spirit of SHIMA SEIKI.

**SHIMA SEIKI**





# Ever Onward

Limitless Progress

We strive to become an indispensable company to the society through sustainable business development.

We do this under the motto of “**Ever Onward**” with “love”, “creation” and “passion” as our mantra.

## Love

We contribute to society through our creative craftsmanship, which is friendly to both people and the environment. We strive to contribute to society through love for our work, people, country, community and the earth.

## Creativity

We aim to create world’s firsts through our finely honed sensitivity and sense of creativity.

## Passion

We tackle new challenges with passion and chart our own future course by putting our all into our products and services.



Founded on the development of the world’s first fully automated glove knitting machine, we at SHIMA SEIKI MFG., LTD. have continuously challenged ourselves to develop innovative technology under our corporate motto **Ever Onward**.

Now, SHIMA SEIKI has evolved into a highly trusted manufacturer of computerized glove knitting machines, computerized flat knitting machines, and computer graphic design systems, with a leadership role in a variety of industries worldwide.

As consumer needs are expected to become more and more diverse, we create a culture of fashion and we will continue to offer unique and highly value-added products for the advancement of our users’ industries.

We are a company whose source for inspiration and motivation is our customers, and we deeply appreciate your continuing trust and support. We at SHIMA SEIKI are confident that we can create a mutually beneficial relationship with all of you.

Chairman  
Masahiro Shima

President  
Mitsuhiro Shima



■ Business Operations

- Masahiro Shima establishes SHIMA SEIKI MFG., LTD., in Wakayama City, Wakayama Prefecture, to produce glove knitting machines that are completely automated.
- Owing to the increasing size of the Company, the administrative offices and factory are moved to Sakata, Wakayama City, the present location.
- Receives a gold medal at an industrial fair in Leipzig, Germany.
- Masahiro Shima receives the 25th Okochi Memorial Technology Award, Japan's most prestigious industrial award for excellence and strength in technological development.
- SHIMA FINE PRESS CO., LTD. is established.
- Opens the Osaka Branch Office.
- Establishes SHIMA SEIKI EUROPE LTD. in the U.K., the company's first overseas subsidiary.
- Opens Taipei Branch in Taiwan.
- Establishes SHIMA SEIKI U.S.A. INC. in New Jersey.
- Opens the Tokyo Branch Office.
- The Shima Idea Center of the SHIMA SEIKI Group and Kamitani Electronic Industries, Ltd. merge into SHIMA SEIKI MFG., LTD.
- Masahiro Shima is awarded the Medal of Honor with Purple Ribbon at the youngest age in the award's history.
- The new headquarters building is completed.
- Company shares are publicly listed on the Second Section of the Osaka Securities Exchange.
- Receives the Tecnica della Confezione International Award.
- Masahiro Shima receives the title of Honorary Doctorate from Cranfield Institute of Technology, U.K., for the development of DSCS®, which revolutionized the knitting industry.
- Receives the Jubilee Award from the Textile Institute of Great Britain.
- Company shares are publicly listed on the First Section of the Tokyo Stock Exchange.



■ Products

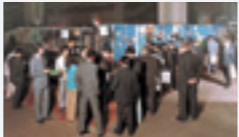
- 1962
- 1964 ..... •Successfully produces a fully automated glove knitting machine.
- 1967 ..... •Begins production of the world's first fully automated collar knitting machine, the FAC, and extends its business into the flat knitting machine industry.
- 1968 ..... •Develops the world's first fully automated semi-full fashion knitting machine, the SF.
- 1969 ..... •Exhibits its fully automated semi-full fashion knitting machine at the Tokyo Harumi International Knitting Machinery Exhibition. The company's presence at this show ensures it a prominent place among manufacturers of flat knitting machines.
- 1970 ..... •Develops the world's first fully automated seamless glove knitting machine, the SFG®.
- 1971 ..... •Displays its full line of machinery at the International Textile Machinery (ITMA) Exhibition in Paris. Upon receiving international acclaim, the company begins exporting its products.
- 1975 ..... •Develops a fully automated jacquard pattern glove knitting machine, the SJG.
- 1978 ..... •Develops the SNC, a computerized flat knitting machine that revolutionizes the apparel industry.
- 1979 ..... •Develops the famed SEC computerized flat knitting machine.
- 1981 ..... •Develops the SDS®-1000 design system.
- 1982 ..... •Improves the seamless glove knitting machine through computerization, successfully allowing the production of gloves in a single process on its SFG® series.
- Develops the SDS®-500 design system.
- 1983 ..... •Displays its full product line at the 9th ITMA Exhibition in Milan, Italy. The main attraction of SHIMA SEIKI's exhibit, the Total Knitting System, gains high recognition from international participants.
- 1985 ..... •Develops the SDS®-380 series computer graphics system, which is adopted in broadcasting and automotive industries, among others.
- Introduces the world's first Digital Stitch Control System (DSCS®) that supports knitting with a dimensional error of just ±1%.
- 1986
- 1987
- 1988 ..... •Develops and markets the PGM-2 apparel CAD system.
- Develops its long-anticipated next-generation computerized flat knitting machine, the SES® series.
- 1991 ..... •Enters the CAD/CAM field with its P-CAM® computerized fabric cutting machine.
- Develops the SES®122-S computerized flat knitting machine with full-time spring-loaded sinker system.
- 1993
- 1994
- 1995 ..... •Develops the SWG® series, the world's first commercially productive WHOLEGARMENT® knitting machines, at the 12th ITMA exhibition in Milan, Italy.
- 1996
- 1997 ..... •The SWG®-FIRST® WHOLEGARMENT® knitting machine featuring the newly developed SlideNeedle™, debuts at OTEMAS.



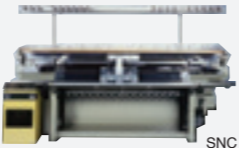
Fully automated glove knitting machine



FAC



International Textile Machinery Exhibition



SNC



SDS®-1000



Apparel CAD PGM-2



SES®122-FF



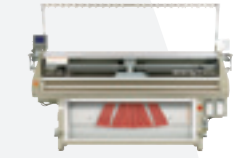
SWG®-V



SDS®-ONE



SDS®-ONE APEX



MACH2®X



SFG®20

- Installs a PV (photovoltaic) system.
- 2000 ..... •Introduces its All-in-One design system, the SDS®-ONE.
- 2002 ..... •Receives ISO 9001 certification for Design and Manufacturing of Apparel Design Systems.
- 2003 ..... •Develops the SWG®021 WHOLEGARMENT® knitting machine.
- 2004 ..... •Develops the NewSFG® 18 gauge model glove flat knitting machine.
- 2006 ..... •Receives the Minister of Economy, Trade and Industry Award for achievements in intellectual property management.
- Establishes SHIMA SEIKI WIN WIN LTD., in Hong Kong.
- Acquires 100% of the shares held by SHIMA-ORSI S.R.L. in Milan, Italy.
- 2007 ..... •Receives the 53rd Okochi Memorial Foundation Grand Production Prize.
- Establishes SHIMA SEIKI WIN WIN SHANGHAI LTD. in China.
- Receives Minister of Economy, Trade and Industry Award for efforts including factories that blend in with the natural surroundings.
- 2008 ..... •Establishes SHIMA SEIKI KOREA INC. in Seoul.
- Establishes TOYOBOSHI KOGYO CO., LTD. in Japan.
- Establishes SHIMA SEIKI SPAIN, S.A.U.
- Opens "Knit Museum" in Wakayama City.
- 2010 ..... •Masahiro Shima is awarded the title of Commander of the Order of the Star of Italian Solidarity (Commendatore dell'Ordine della Stella della Solidarieta Italiana), which is the second-highest honor of the Order, for his contribution to the Italian Republic.
- 2011 ..... •Develops the SWG®-FIRST® 154 computerized flat knitting machine, which allows shaping in 21 gauge—a world first.
- Introduces the SDS®-ONE APEX3 design system, which boasts greater speed and an improved simulation function.
- 2012 ..... •Completes construction of the FA3 plant, which is dedicated to the assembly of WHOLEGARMENT® knitting machines.
- Holds a fashion show in commemoration of its 50th anniversary.
- 2012 ..... •Develops the P-CAM®120C computerized cutting machine to support industrial materials including carbon fiber and composites.
- 2013 ..... •Introduces the SRY®123LP, a computerized flat knitting machine featuring newly developed loop presser beds.
- Introduces the SVR® series computerized flat knitting machines.
- 2014 ..... •Masahiro Shima receives an honorary degree of Doctor of Business Administration from Drexel University, USA.
- 2015 ..... •Masahiro Shima receives the 17th Kigyoka Prize/Kigyoka Grand Prize sponsored by Kigyoka Network Co., Ltd.
- SHIMA SEIKI Headquarters receives ISO14001 certification.
- 2016 ..... •Receives Prime Minister's Award for contributions to greening efforts.
- Computerized Flat Knitting Machine is selected as one of the "100 Most Significant Innovations of Post-War Japan" by the Japan Institute for Promoting Invention and Innovation.
- 2016 ..... •Introduces the Shima Trend Archive & Forecast "staf®" web service for stimulating creative product planning and design in the fashion industry.
- Introduces "Shima KnitPLM®", the world's first PLM Software for Flat Knitting Industry.
- 2017 ..... •Establishes a nursery school SHIMA KIDS LAND in the enterprise.
- Founder Masahiro Shima assumes position as chairman, and Mitsuhiro Shima assumes position as president.
- Fully Automated Glove Knitting Machine is certified as "Mechanical Engineering Heritage" by the Japan Society of Mechanical Engineers.
- Masahiro Shima awarded the Order of the Rising Sun, Gold Rays with Neck Ribbon.
- Holds a fashion show in commemoration of its 55th anniversary, proposes sustainable measures.
- Masahiro Shima receives an honorary degree of Doctor of Science Administration from North Carolina State University Textile College, USA.
- 2017 ..... •Introduces the SVR®093/123SP, a computerized flat knitting machine featuring i-Plating®.
- 2018 ..... •MACH2®XS WHOLEGARMENT® knitting machine series receives the Energy-Efficient Machinery Award from the Japan Machinery Federation.
- 2018 ..... •Computerized flat knitting machine sales reach 200,000 units.
- Introduces the SFG®20-21G glove knitting machine capable of knitting a range of glove sizes on a single machine.
- 2019 ..... •Masahiro Shima receives a Nikkei xTECH Award in the 17th Japan Innovators Award 2019, hosted by Nikkei Business Publications, Inc.
- 2019 ..... •WHOLEGARMENT® knitting machine sales reach 10,000 units.



Creating  
First-of-Its-Kind  
Technology

Based on our philosophy of creating something totally new, we fuse creativity and refined sensitivity to come out with technologically innovative products that satisfy our customers' exacting needs.

The Evolution from Glove to WHOLEGARMENT®



**Knife Auto Width Measurement (P-CAM®)**

The original Knife Auto Width Measurement function enables higher accuracy in cutting.

**Design**

A wealth of design functions are used for design patterns and colorways, enabling attractive designs to be created with high efficiency.



**A Fusion of Computers and Mechatronics**

**Virtual Sampling**

Planning times are drastically reduced through realistic 3D simulation of materials and products.



**Knit Programming**

Abundant know-how enables complex knitting patterns to be created easily and efficiently.



**i-Plating®**

In plating knitting, in which two types of yarn are supplied to the knitting needle, i-Plating® enables the user to control—for each needle—the yarn appearing on the fabric surface, thereby greatly enhancing the range of pattern and design.



**i-DSCS+DTC®**

By automatically adjusting yarn feed, this system eliminates irregularities even with difficult-to-handle yarn, thereby contributing to improved product quality.

**Tension Measuring Machine**

By digitizing the characteristics of stretch yarn, this system realizes stable knitting.

**SlideNeedle™**

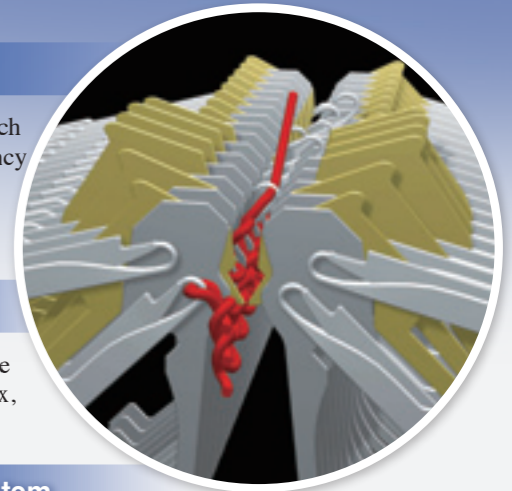
Compared with conventional latch needles, it enables higher efficiency and productivity in knitting and produces fabrics of the highest possible quality.

**4-Bed Configuration**

Four independent needle beds make it possible to carry out complex, WHOLEGARMENT® knitting.

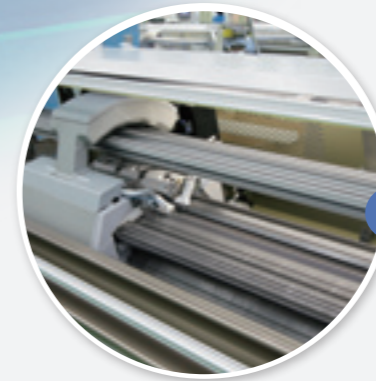
**Moveable Full Sinker System**

Moveable full sinkers are mounted on 4 needle beds, which enable a wider choice of designs and higher productivity.



**Loop Presser Beds (SRY®/SVR®-SP)**

Loop presser beds make it possible to control typical stretch characteristics of knitwear.



**R2CARRIAGE® System**

This carriage system plays a critical role in improving productivity. With its enhanced acceleration and deceleration and improved maximum speed, it significantly reduces knitting times.





Harnessing our sophisticated technology in both hardware and software, we make everything in-house to ensure high product quality.



### Processing Technology

High quality is assured with highly skilled precision.



### Assembly

Behind SHIMA SEIKI's success is a wealth of advanced technologies.



Assembly of computerized knitting machines



Assembly of computerized cutting machines



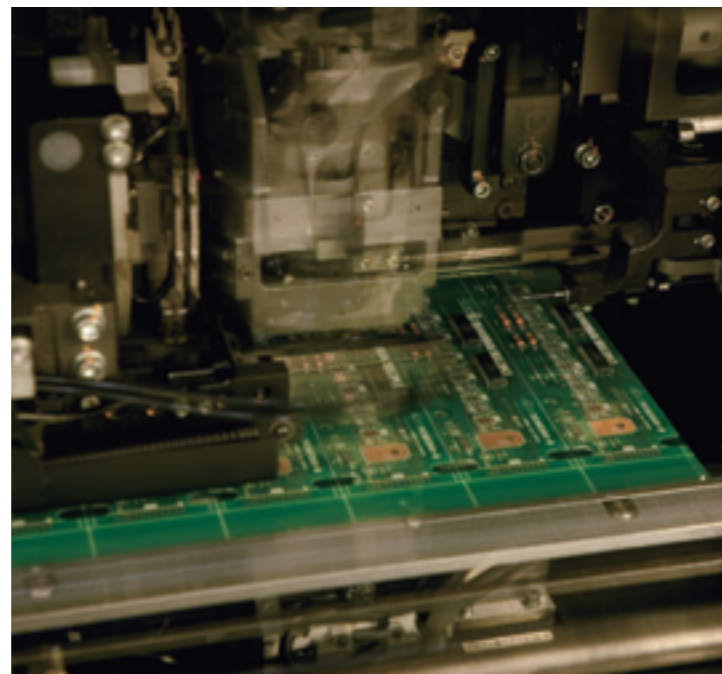
Assembly of design systems



Assembly of glove knitting machines

### Electronic Components

Precision electronics technology is applied to every step of the manufacturing process.





We aspire to be a source of innovative manufacturing by making proposals based on our vision for the future.

Planning and Proposal

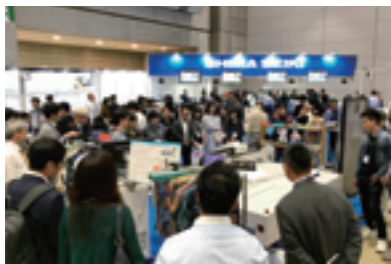


Headquarters showroom



Planning session for new knitwear samples

Providing the Latest Information



55TH FISMA TOKYO (Tokyo)

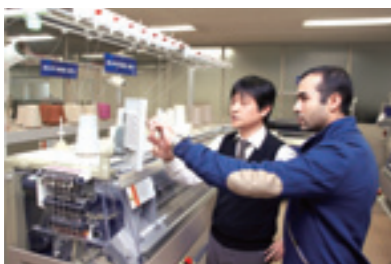


PREMIERE VISION PARIS (Paris)



ITMA ASIA + CITME 2018 (Shanghai)

Training and Support



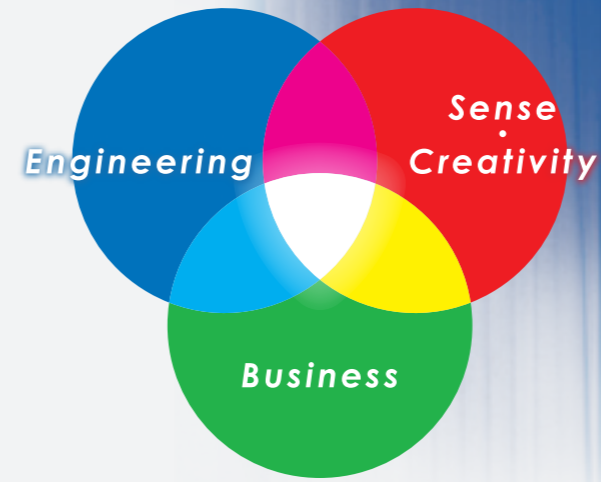
Training for flat knitting machines



Training for design systems



Training for CAD/CAM systems



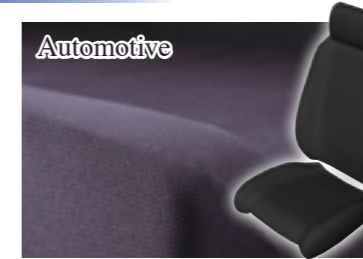
製品づくりのコンセプト  
 企画提案型  
 魅力のある商品  
 洋服感覚  
 高感度・高感性  
 多品種・少量  
 クイックレスポンス(QR)  
 マーケティング  
 効率化  
 情報化(マルチメディア)  
 平準化・複合化

Developing Business in New Fields

Healthcare・Sports



Smart bellyband



Seat covers

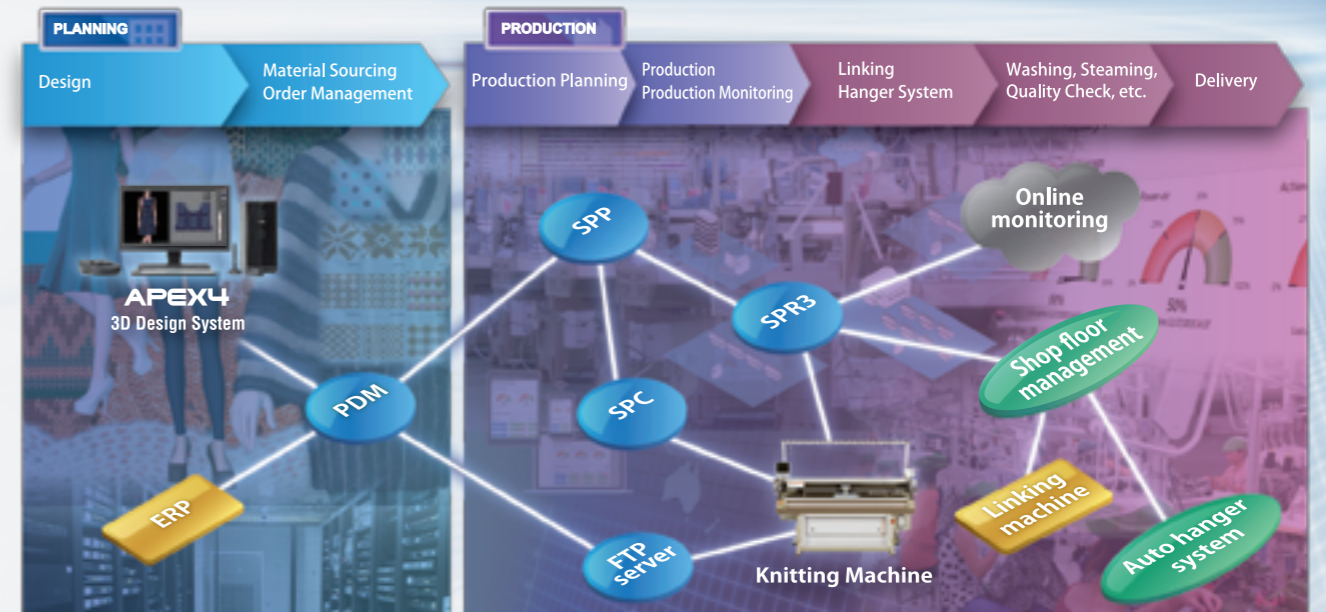


Support wear

Shima KnitPLM®

The world's first specialized PLM solution for the flat knitting machine industry

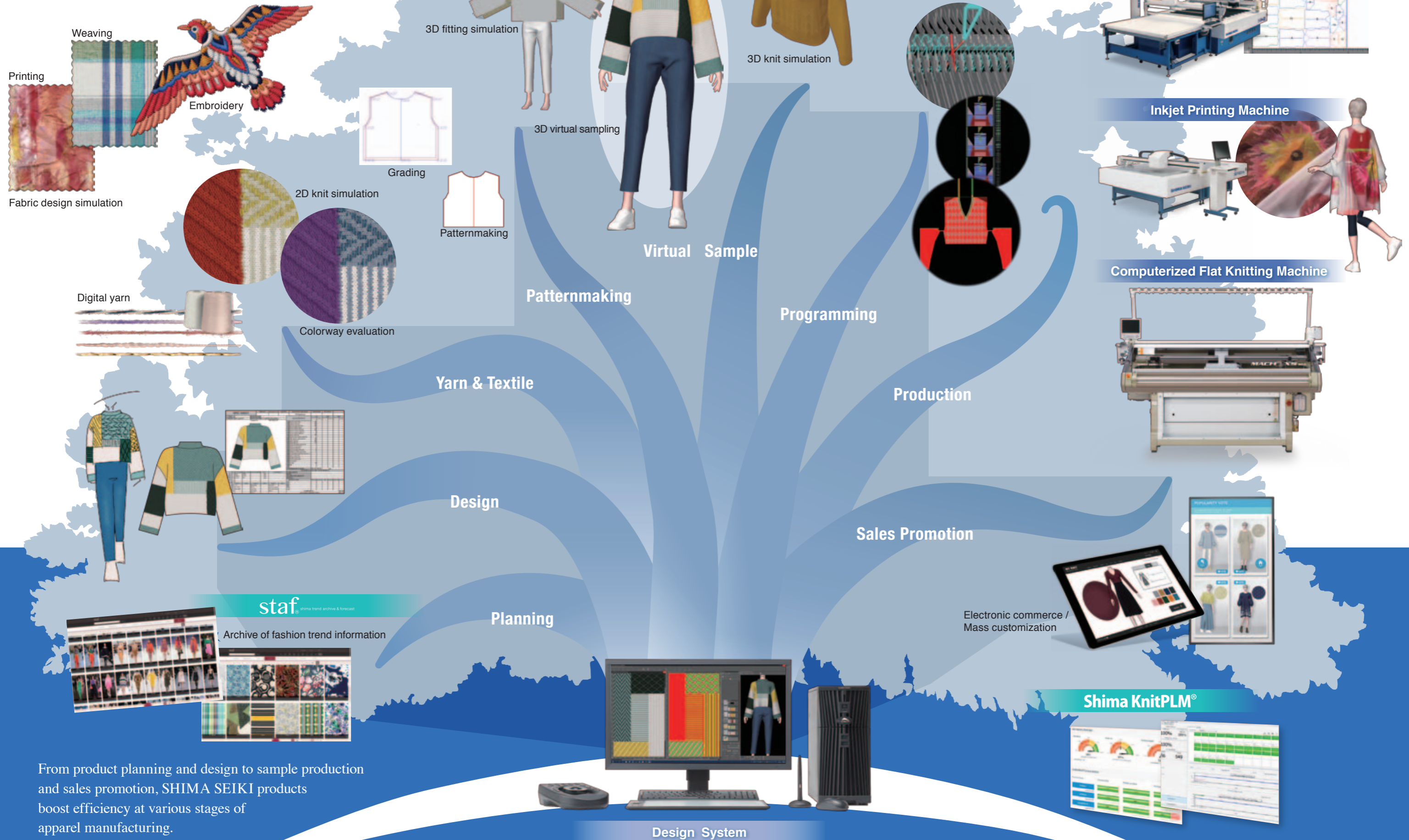
With globalization and diversification, the fashion industry requires even higher speeds and shorter cycles. Shima KnitPLM (Product Lifecycle Management) applies the latest IoT technology to achieve higher productivity throughout all stages in the value chain. Meanwhile, production planning, management and monitoring realize optimum production conditions for improved efficiency.





Concept

# TOTAL FASHION SYSTEM



From product planning and design to sample production and sales promotion, SHIMA SEIKI products boost efficiency at various stages of apparel manufacturing.



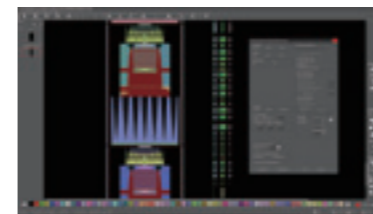
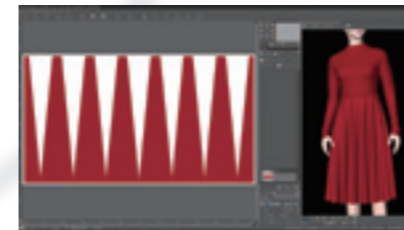


# WHOLEGARMENT®

Based on SHIMA SEIKI's pioneering flat knitting machine technology, WHOLEGARMENT® is the world's first seam-free knitwear. Each WHOLEGARMENT® product is knit in three dimensions in one entire piece, meaning customers can enjoy a range of benefits like never before.



SDS-ONE® APEX4 design system which offers complete solutions in design and programming, realizes 3D virtual simulations at high speed and in high resolution.



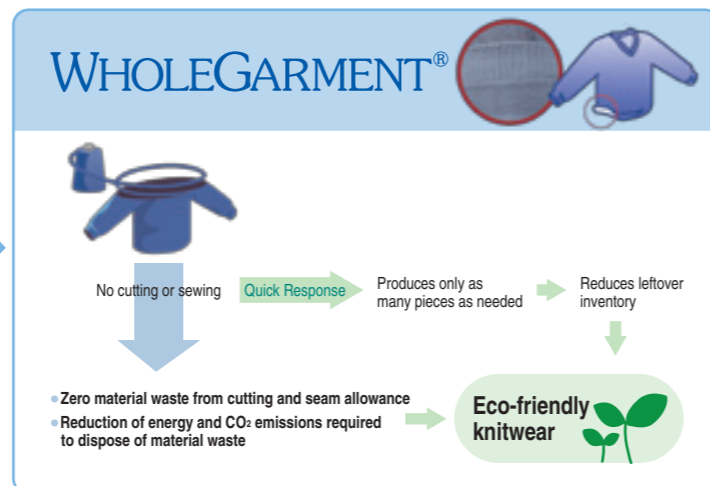
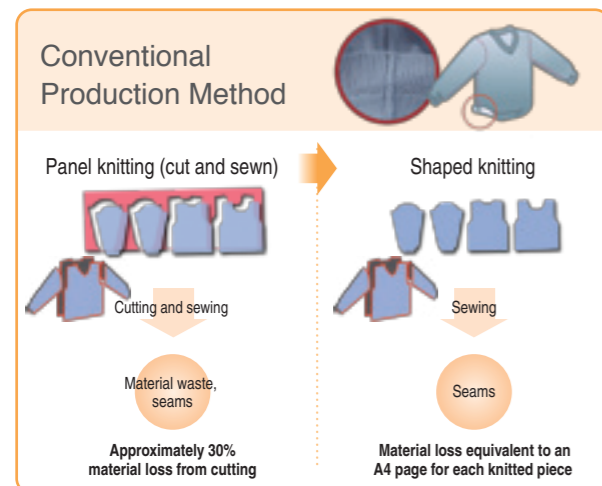
Virtual sample

## People-Friendly

- Beautifully shaped, with no bulky seams
- Soft and light, with superb comfort and fit
- Superior stretch characteristics means unrestricted body movement

## Eco-Friendly

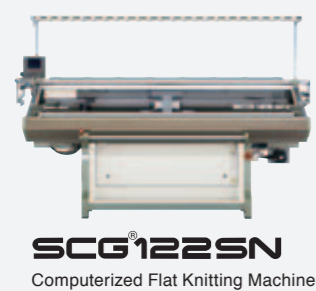
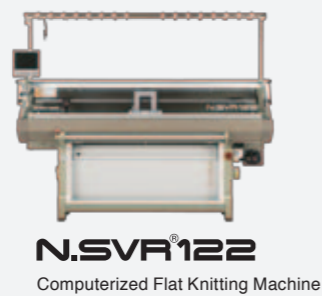
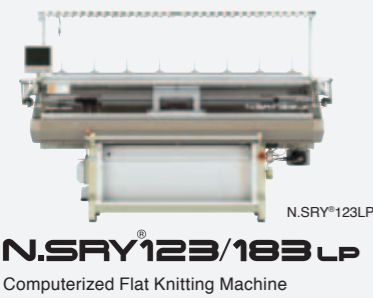
- Produces only as many pieces as needed, when needed
- Uses minimal resources, without the need for sewing



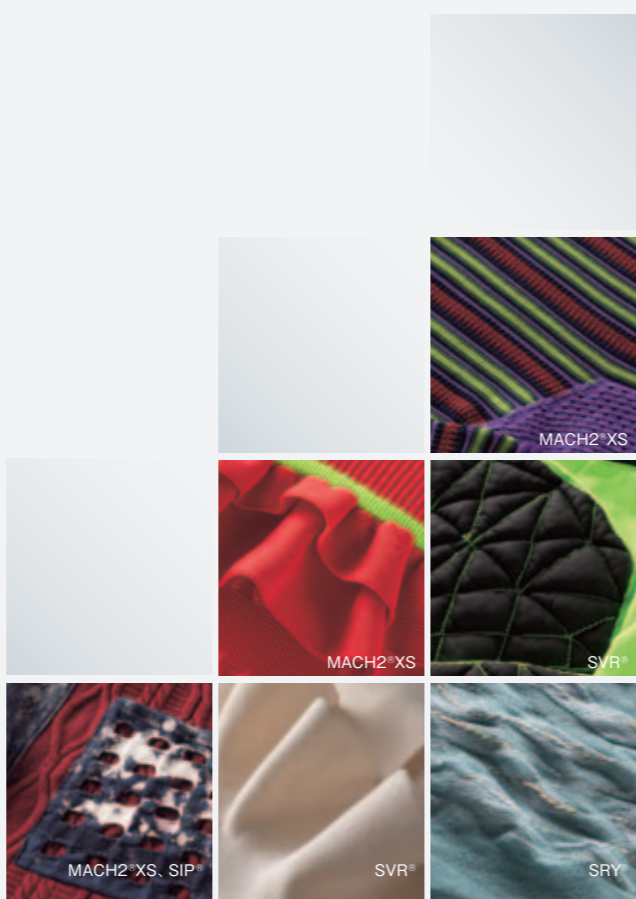


User-friendly ease of operation, speed, and multiple functions have made our computerized flat knitting machines a success on the world market. A full line-up offers users the ability to manufacture knitwear that is always at the leading edge of fashion.

Computerized Flat Knitting Machines



Glove/Sock Knitting Machines



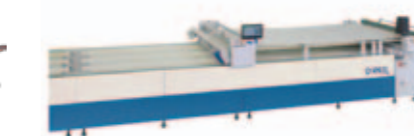
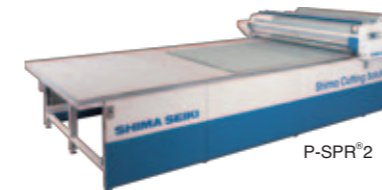
Design System



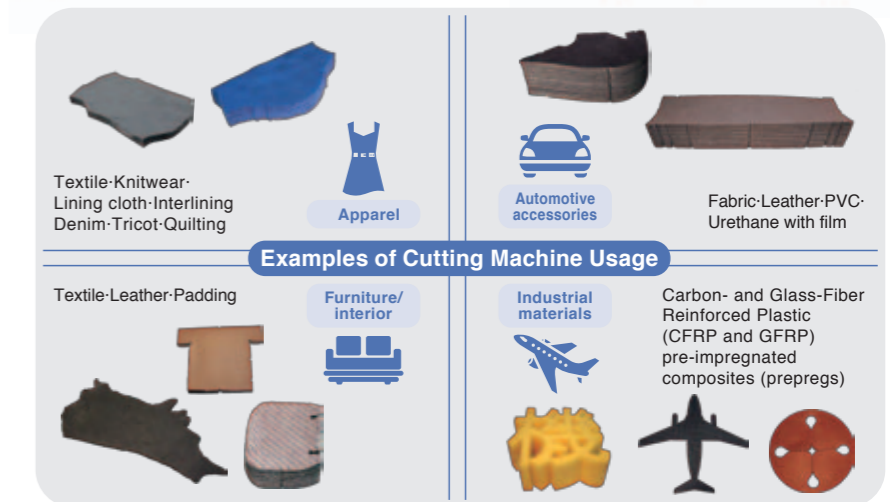
Examples of Design System Usage



Computerized Cutting Machines



Inkjet Printing Machine







Social Contribution



- Community service activities**
- Building beautiful townscapes, cleaning up, helping out after disasters
- Cultural and educational activities**
- Opening museums, industry-academia projects, internships for students
  - Promoting sports, spreading food culture

Environment  
(energy efficiency,  
resource efficiency)



- Environmental protection activities**
- Acquiring ISO 14001, greening efforts, solar electricity generation
  - Providing environmentally friendly products

Sustainability



The SDS-ONE® APEX4 allows the creation of realistic, highly detailed virtual samples, while the WHOLEGARMENT® knitting machine can knit garments quickly and intelligently. These developments have shaken up the textile industry and make possible highly sustainable manufacturing.



**Sustainability @ SHIMA SEIKI**



SHIMA SEIKI Headquarters is certified as an ISO14001 accredited company.





SHIMA SEIKI (HONG KONG) LTD. (CHINA)



SHIMA SEIKI ITALIA S.p.A. (ITALY)



SHIMA SEIKI EUROPE LTD. (U.K.)



SHIMA SEIKI U.S.A. INC. (U.S.A.)

Worldwide recognition brings with it the responsibility to live up to customers' expectations as a reliable international corporation.

SHIMA SEIKI's global network features an impressive list of contacts in domestic and overseas locations.

- Headquarters
- Local subsidiaries, branch offices
- Contacts



Overseas Contacts

1 SHIMA SEIKI (HONG KONG) LTD.

3/F, S.A.C.C., 64 Tsun Yip Street, Kwun Tong, Kowloon, HONG KONG  
Tel:+852-2898-8339 Fax:+852-2558-8332 enquiry@shimaseiki.com.hk

SHIMA SEIKI DESIGN CENTER OF HONG KONG

2 SHIMA SEIKI WIN WIN SHANGHAI LTD.

Rm 2510, No.2299, Yan An Road (West), Shanghai, 200336 P.R. CHINA  
Tel:+86-21-5270-9898 Fax:+86-21-5270-9797 shimawinwinsh@shimawinwinsh.com

SHIMA SEIKI DESIGN CENTER OF SHANGHAI

Network

BEIJING INNER MONGOLIA SHANDONG (HAIYANG)  
ZHANGJIAGANG TONGXIANG TAIZHOU FUJIAN (QUANZHOU)

3 SHIMA SEIKI WIN WIN DONGGUAN LTD.

No.236, Fu Li Road, Xiang Wei Cun, Dalang Town, DongGuan City, Guangdong Province, CHINA 523776  
Tel:+86-769-8318-9234 Fax:+86-769-8318-9214 dongguan@shimaseiki.com.hk

SHIMA SEIKI DESIGN CENTER OF DONGGUAN

4 SHIMA SEIKI (HONG KONG) LTD. TAIWAN BRANCH

5F., No.201, Sec. 2, Tiding Blvd., Neihu Dist., Taipei 11493, TAIWAN  
Tel:+886-2-7729-9098 Fax:+886-2-8797-5522 info@shimaseiki.com.tw

5 SHIMA SEIKI (HONG KONG) LTD. CAMBODIA BRANCH

No.3BC, St.306, Phnom Penh, CAMBODIA  
Tel:+855-236-388-882 Fax:+855-2398-7465 enquiry@shimaseiki.com.hk

6 SHIMA SEIKI (THAILAND) CO., LTD.

19, 21 Soi 30 Rama 2, Rama 2 Road, Bangmod, Jomthong, Bangkok 10150 THAILAND  
Tel:+66-2-452-0550 Fax:+66-2-452-0537

7 SHIMA SEIKI KOREA INC.

Seojung Bldg, 47, Ahasan-Ro 58-Gil, Gwangjin-Gu, Seoul, KOREA 05049  
Tel:+82-2-2216-4057 Fax:+82-2-2216-4711 info@shimaseiki.co.kr

8 SHIMA SEIKI VIETNAM CO., LTD.

1st/M Fl., 151 Tran Trong Cung St., Tan Thuan Dong Ward, Dist. 7, Ho Chi Minh City, VIETNAM  
Tel:+84-28-3773-8001 Fax:+84-28-3773-8010 info@shimaseiki.com.vn

9 SHIMA SEIKI ITALIA S.p.A.

Via Martiri di Cefalonia 6 – 20090 – Segrate (MI) ITALY  
Tel:+39-02-216621 Fax:+39-02-2139410 info@shimaseiki.eu

SHIMA SEIKI DESIGN CENTER OF MILANO

10 SHIMA SEIKI EUROPE LTD.

Sills Road, Willow Farm Business Park, Castle Donington, Derbyshire, DE74 2US, U.K.  
Tel:+44-1332-814770 Fax:+44-1332-850272 info@shimaseiki.co.uk

SHIMA SEIKI DESIGN CENTER OF DERBY

11 SHIMA SEIKI FRANCE SARL

24, Rue du Moulin des Bruyeres 92400 Courbevois, FRANCE  
Tel:+33-1-47-88-27-42 Fax:+33-1-47-88-10-78 info@shimaseiki.fr

12 SHIMA SEIKI SPAIN, S.A.U.

Poligono Industrial Can Salvatella, Calle Comadran 35 08210 Barbera Del Valles, Barcelona, SPAIN  
Tel:+34-93-7293727 Fax:+34-93-7180626 shimaseiki@shimaseiki.es

SHIMA SEIKI DESIGN CENTER OF BARCELONA

13 SHIMA SEIKI PORTUGAL, UNIPessoal LDA

Rua S. Juliao 241, Apartado 3142, Avintes 4431-801, PORTUGAL  
Tel:+351-22-787-8580 Fax:+351-22-787-8589 shimaseiki@shimaseiki.pt

14 SHIMA SEIKI MOROCCO SLU

Lot I, Rue 19, N° 17 Hay Al Qods, Bernoussi Casablanca, MOROCCO  
Tel:+212 - 66 50 28 338 hassan@shimaseiki.es

15 SHIMA SEIKI U.S.A. INC.

22 Abeel Road, Monroe Twp., NJ 08831 U.S.A.  
Tel:+1-609-655-4788 Fax:+1-609-655-3989 info@shimaseikiusa.com

SHIMA SEIKI DESIGN CENTER OF NEW YORK

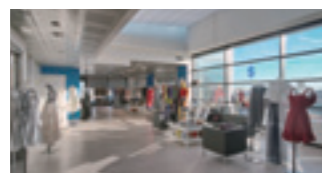
501 7th Avenue Suite #412 New York, NY 10018 U.S.A.  
Tel:+1-609-655-4788 Fax:+1-212-391-4016 dny@shimaseikiusa.com

SHIMA SEIKI U.S.A. INC. LOS ANGELES OFFICE

2301 East. 7Th Street, Unit A-350 Los Angeles, Ca 90023 U.S.A.  
Tel:+1-609-655-4788 Fax:+1-213-232-5119



SHIMA SEIKI DESIGN CENTER OF HONG KONG (CHINA)



SHIMA SEIKI DESIGN CENTER OF MILANO (ITALY)



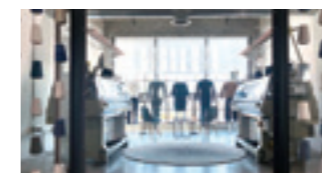
SHIMA SEIKI DESIGN CENTER OF DERBY (U.K.)



SHIMA SEIKI DESIGN CENTER OF BARCELONA (SPAIN)



SHIMA SEIKI DESIGN CENTER OF NEW YORK (U.S.A.)



SHIMA SEIKI U.S.A. INC. L.A. SHOWROOM (U.S.A.)



TOKYO COMMUNICATION SPACE (JAPAN)



WEST JAPAN COMMUNICATION SPACE (JAPAN)



## Branch & Sales Office

TSC : Technical Service Center

### Tokyo Branch Office

10F, Chuo-ku Nihonbashi 2-8-6, Tokyo 103-0027 JAPAN  
Tel: +81-3-3246-0511 Fax: +81-3-3246-0515

### Tokyo TSC Kofu

Nakakoma-gun Showa-cho Nishijo 3688, Yamanashi 409-3866 JAPAN  
Tel: +81-55-222-0511 Fax: +81-55-222-0515

### Tokyo TSC Ota

Ota-shi Uchigashima-cho 1448-7, Gunma 373-0813 JAPAN  
Tel: +81-276-47-0511 Fax: +81-276-47-149

### East Japan Branch Office

Gosen-shi Funakoshi Aza Enakase 133-1, Niigata 959-1805 JAPAN  
Tel: +81-250-43-0511 Fax: +81-250-43-0981

### East Japan TSC Yamagata

Kubota 2-1-34, Yamagata 990-2482 JAPAN  
Tel: +81-23-643-4629 Fax: +81-23-644-7907

### East Japan TSC Fukushima

Date-shi Hobara-cho Aza Rokumanbo 59-1, Fukushima 960-0639 JAPAN  
Tel: +81-24-576-3291 Fax: +81-24-575-4563

### West Japan Branch Office

Osaka Ekimae Building 4, 15F, Kita-ku Umeda 1-11-4-1500, Osaka 530-0001 JAPAN  
Tel: +81-6-6344-0511 Fax: +81-6-6344-2204

### West Japan TSC Nagoya

Nagoya-shi Naka-ku Iseyama 1-4-10, Aichi 460-0026 JAPAN  
Tel: +81-52-363-0511 Fax: +81-52-323-8210

### West Japan TSC Senshu

Izumitsu-shi Kitatoyonaka-cho 2-17-20, Osaka 595-0012 JAPAN  
Tel: +81-725-31-0511 Fax: +81-725-31-4480

### West Japan TSC Shikoku

Higashikagawa-shi Minato 1887-2, Kagawa 769-2701 JAPAN  
Tel: +81-879-24-0511 Fax: +81-879-24-0515

## Related Companies

### TOYOBOSHI KOGYO CO., LTD

Sennboku-gun Tadaoka-cho Tadaoka-higashi 3-3-10, Osaka 595-0805 JAPAN  
Tel: +81-725-22-3190 Fax: +81-725-33-2161  
E-mail: info@toyoboshi.co.jp

### INNOVATION FACTORY CO., LTD.

326 Kozaki, Wakayama 640-8314 JAPAN  
Tel: +81-73-474-6648 Fax: +81-73-474-6649

## Related Facilities

### FUSION MUSEUM

#### Fusion Museum

Forte Wajima 3F, Honmachi 2-1, Wakayama 640-8033 JAPAN  
Tel: +81-73-488-1962



### Auberge de South Terrace

#### Auberge de South Terrace

Nishimuro-gun Shirahama-cho 2998-10, Wakayama 649-2211 JAPAN  
Tel: +81-739-42-4555 Fax: +81-739-43-2720



## Corporate Profile

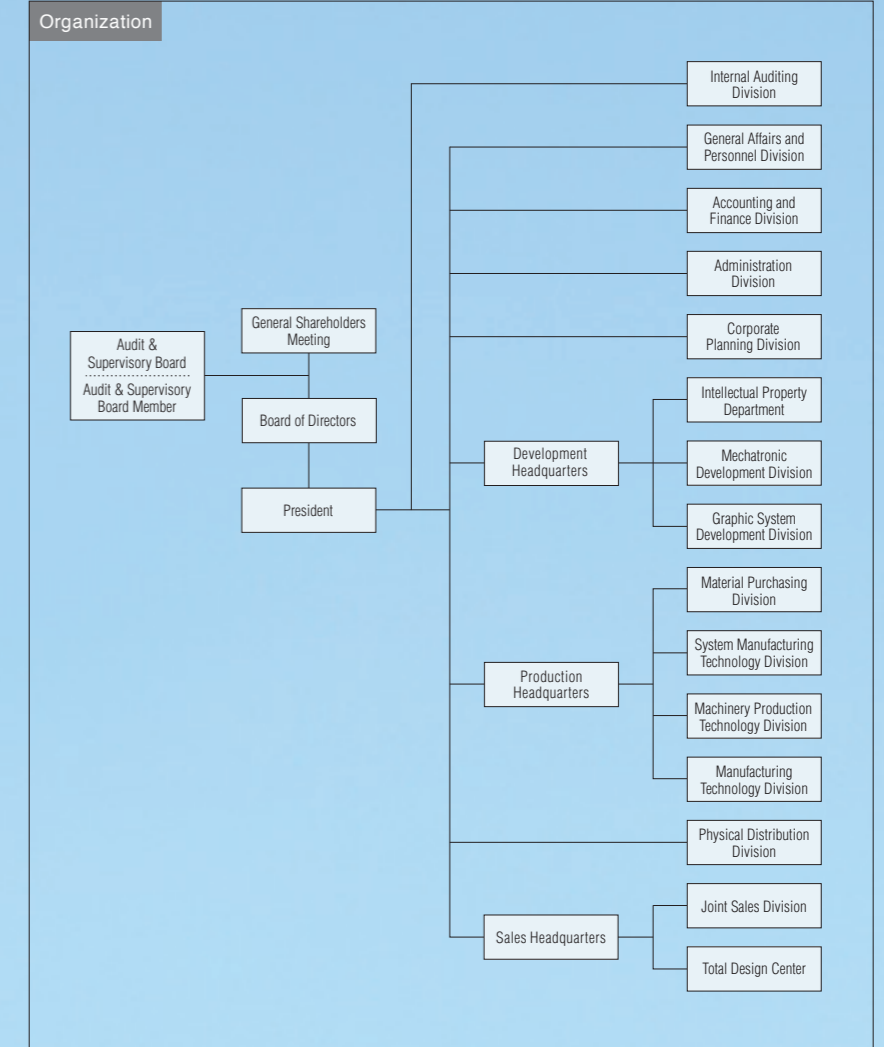
**Company Name** SHIMA SEIKI MFG., LTD.  
**President** Mitsuhiro Shima  
**Established** February 4, 1962  
**Headquarters** 85 Sakata, Wakayama 641-8511 Japan  
Tel : +81-73-474-8210, 8211, 8212, 8207  
Fax: +81-73-474-8270  
**Website** http://www.shimaseiki.com  
**Sales** 61,038 million yen  
(non-consolidated; fiscal year ended March 2018)  
**Capital** 14,859.8 million yen  
**Employees** 1,324  
(non-consolidated; fiscal year ended March 2018)  
**Main Banks** MUFG Bank, Ltd.  
The Senshu Ikeda Bank, Ltd.  
The Kiyo Bank, Ltd.  
Sumitomo Mitsui Banking Corporation  
The Shoko Chukin Bank, Ltd.  
Mitsubishi UFJ Trust and Banking Corporation



Entrance hall (first floor, headquarters building)



Hall with a 214-inch screen (first floor, headquarters building)



## Factory

85 Sakata, Wakayama 641-8511 JAPAN  
Tel: +81-73-474-8210 Fax: +81-73-474-8270

SHIMA SEIKI, WHOLEGARMENT, MACH2, FIRST, SWG, SES, SFG, SIR, SIG, SSG, SSR, SVR, LAPIS, SCG, SRY, SDS, SDS-ONE, SDS-ONE APEX, SIP, P-CAM, P-SPR, P-LAB, SlideNeedle, R2CARRIAGE, WideGauge, DSCS, i-DSCS+DTC, i-Plating, Shima KnitPLM, staf and TOTAL FASHION SYSTEM are either registered trademarks or trademarks of SHIMA SEIKI MFG., LTD. in Japan and/or other countries.